



Bespoke moulded components

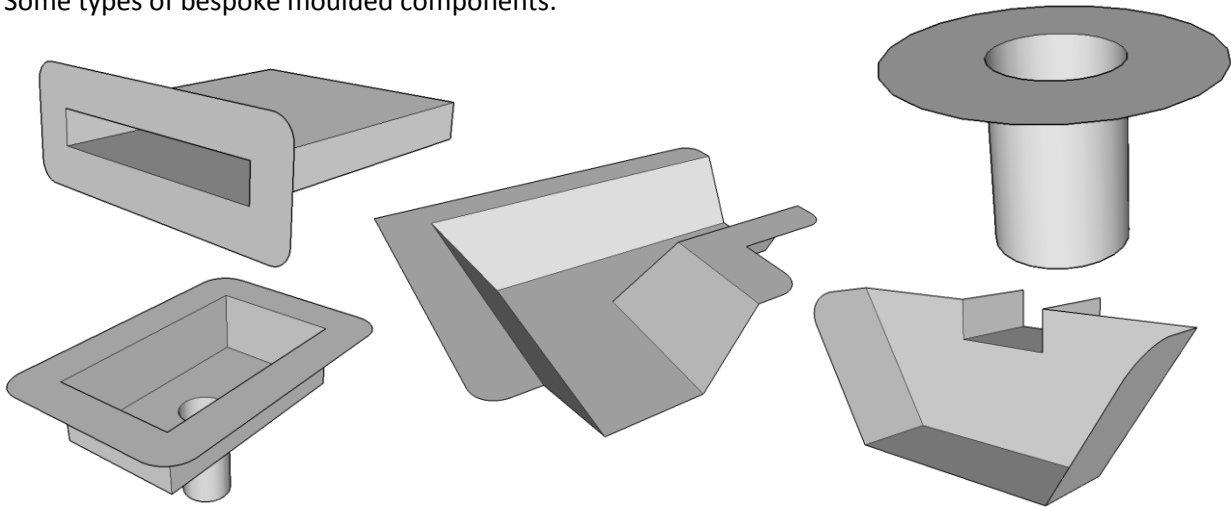
Fitting recommendations

(PLEASE READ ALL OF THIS GUIDE BEFORE STARTING TO FIT YOUR BESPOKE MOULDED COMPONENT)

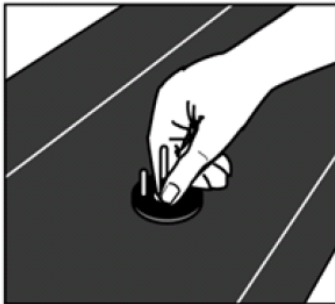
LINER TO BE FIXED AROUND APERTURE BEFORE WELDING

It is the responsibility of installers to ensure that safe working practices are observed. We recommend that all work is carried out in accordance with H.S.E information sheets, reference construction sheet numbers 20, 21, 22.

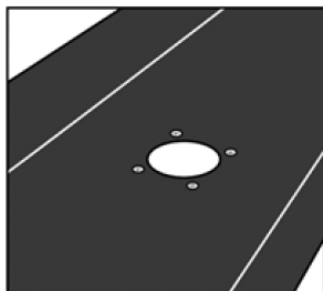
Some types of bespoke moulded components:



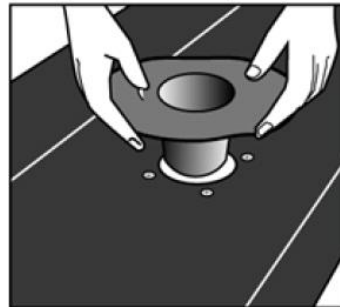
1) Cut out aperture



2) Mechanically fix liner around aperture



3) Fit the bespoke moulded component



4) Weld the flange to the liner (refer to welding leaflet GSW1A/B)

