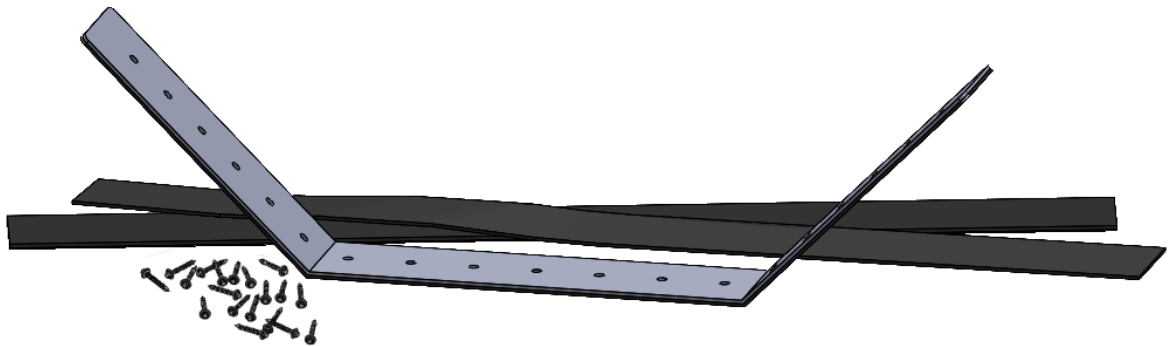
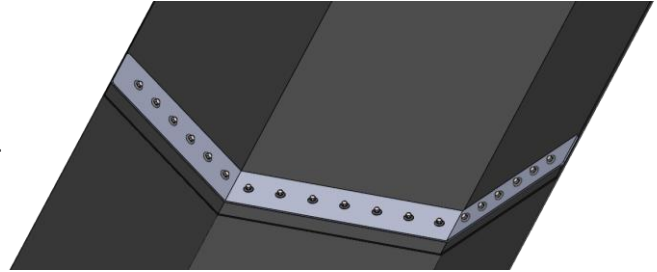


LJS Fitting Guide

Liner Joint Sealing Kit

For joining two Plygene liners within a gutter and creating a watertight seal.



Contents

- 1 x Pre-Punched Stainless-Steel Strip with Pre-Bonded EPDM Gasket
- 2 x EPDM Self Adhesive Gasket
- Stainless Steel Fixings with Sealing Washers

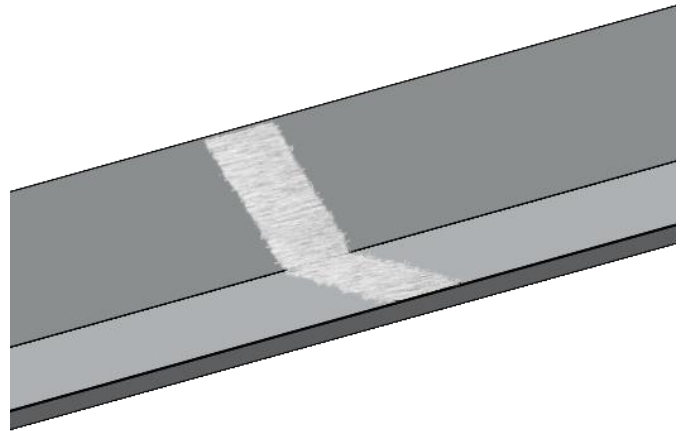


If you require any further support during your installation, please feel free to Contact the Technical Team on 01298 812371 - Alternatively, you can email us at technical@hdsharman.co.uk using your order number as the subject.



Prepare the section of gutter to ST2 standard.

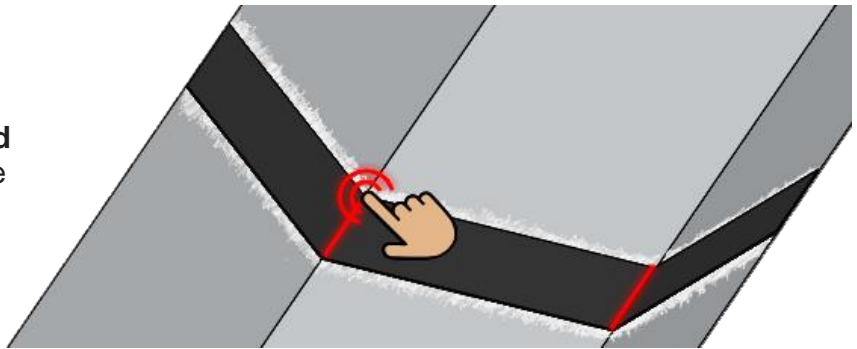
(Back to the base substrate, clean and dry).



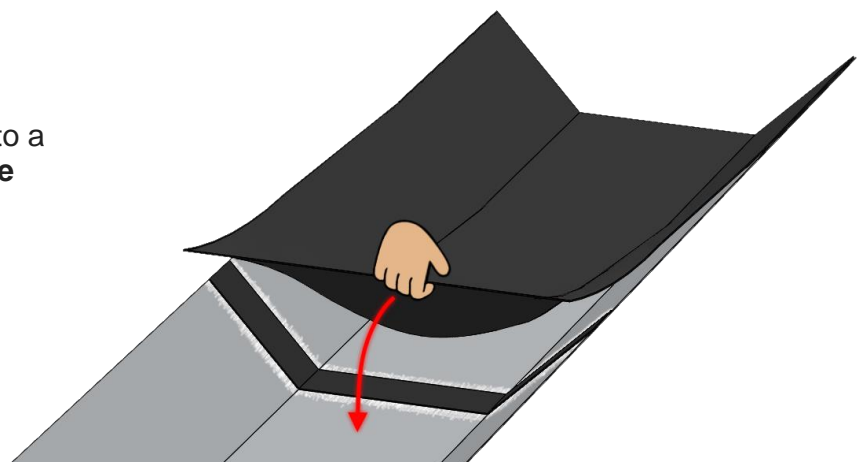
Remove the protective backing from the EPDM Gasket.

Place strip on the prepared area, with the adhesive side facing down.

Ensure the gasket is **firmly pressed into the crease lines**.

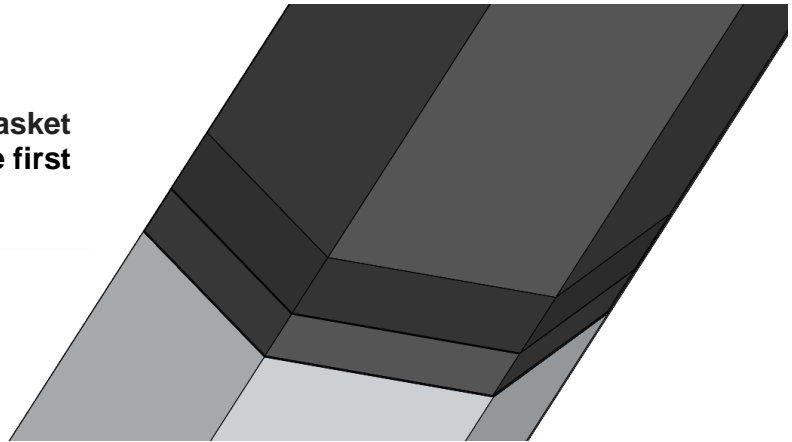


Install the Plygene Liner to a minimum of **10mm past the EPDM Gasket**.

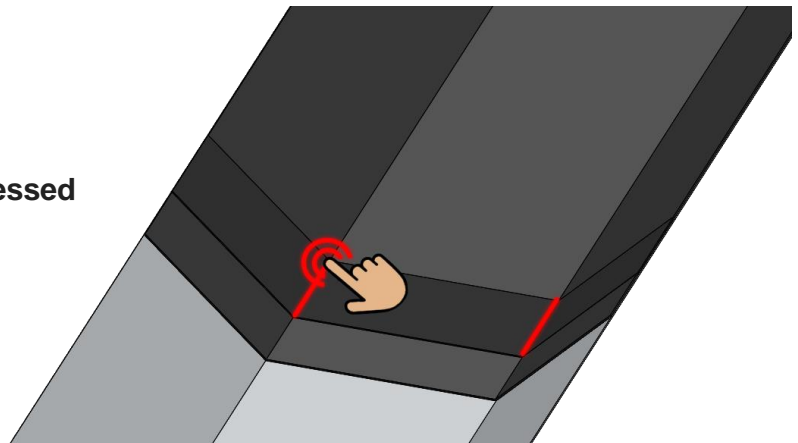




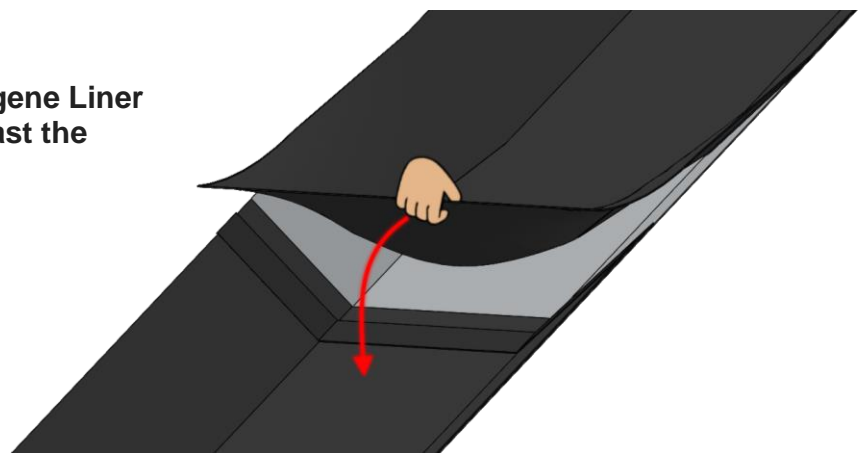
Position the second EPDM Gasket onto the Liner directly over the first EPDM Gasket.



Ensure the gasket is firmly pressed into the crease lines.

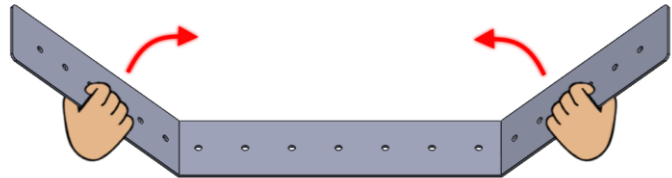


Install the adjoining Plygene Liner to a minimum of 10mm past the EPDM Gasket.

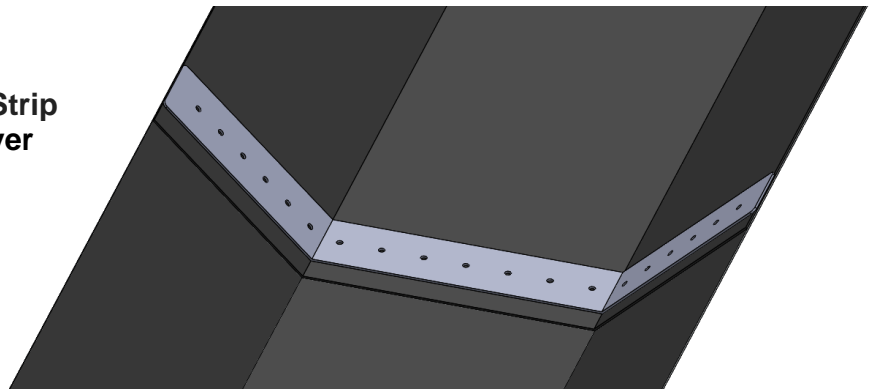




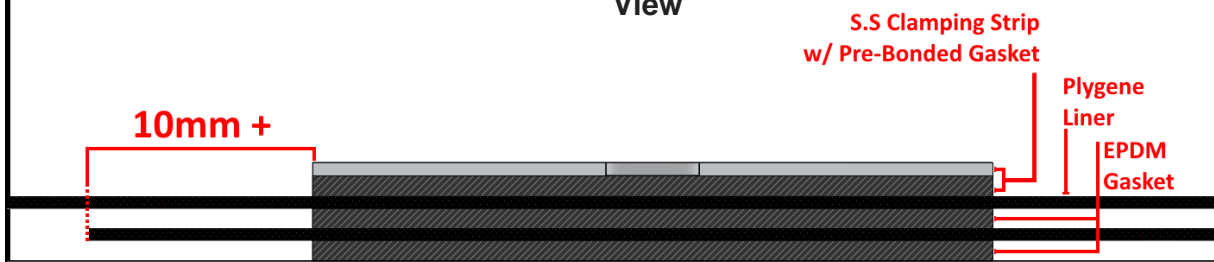
Pre-bend the Stainless-Steel Clamping Strip to match the gutter profile.



Position the Clamping Strip onto the Liner **directly over the EPDM Gaskets**.



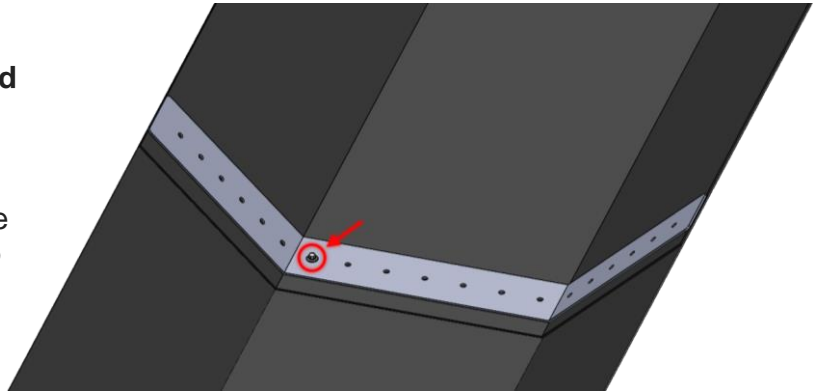
Cut-Through View





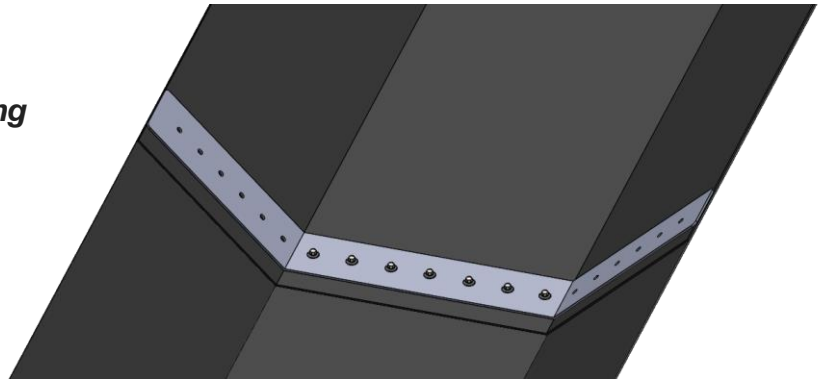
Push the Clamping Strip hard into the crease. Ensure the gasket is compressed.

Fit the first fixing through the pre-punched **hole closest to the side** crease of the gutter base.

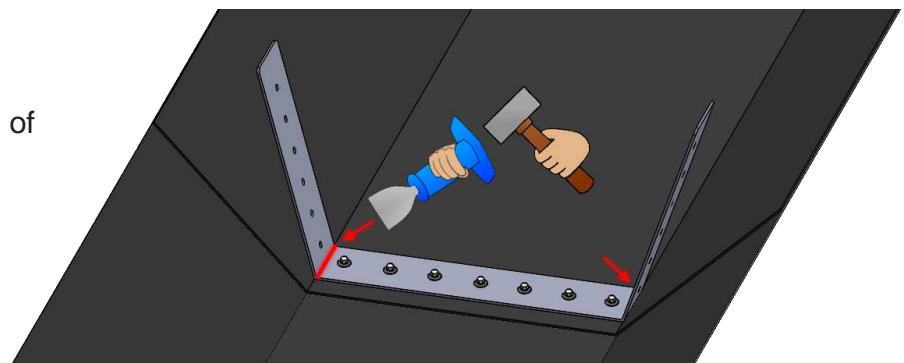


Complete fixing across the **base**. Use the **torque setting** on your screw gun.

Do not over compress.



Form the Clamping Strip into the crease of the gutter using a **hammer** and **bolster chisel**.

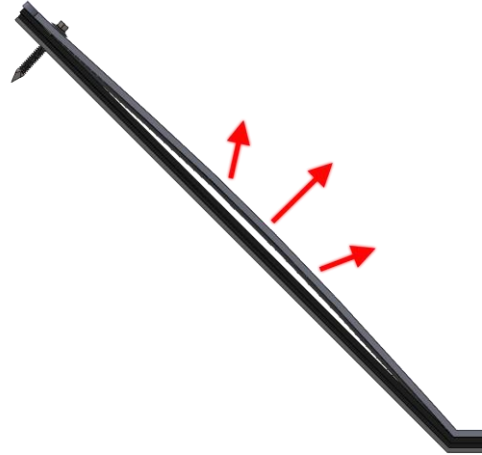




Fit the uppermost fixing.

Push against overbent clamping strip.

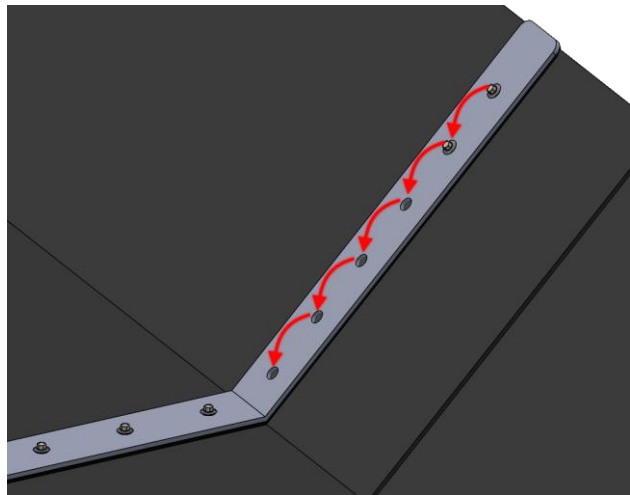
This will **create a slight arc** in the slope.



Complete the fixings for the side, **working from the top downwards.**

Use the **torque setting** on your screw gun.

Do not over compress.



Repeat the process for the other side.

