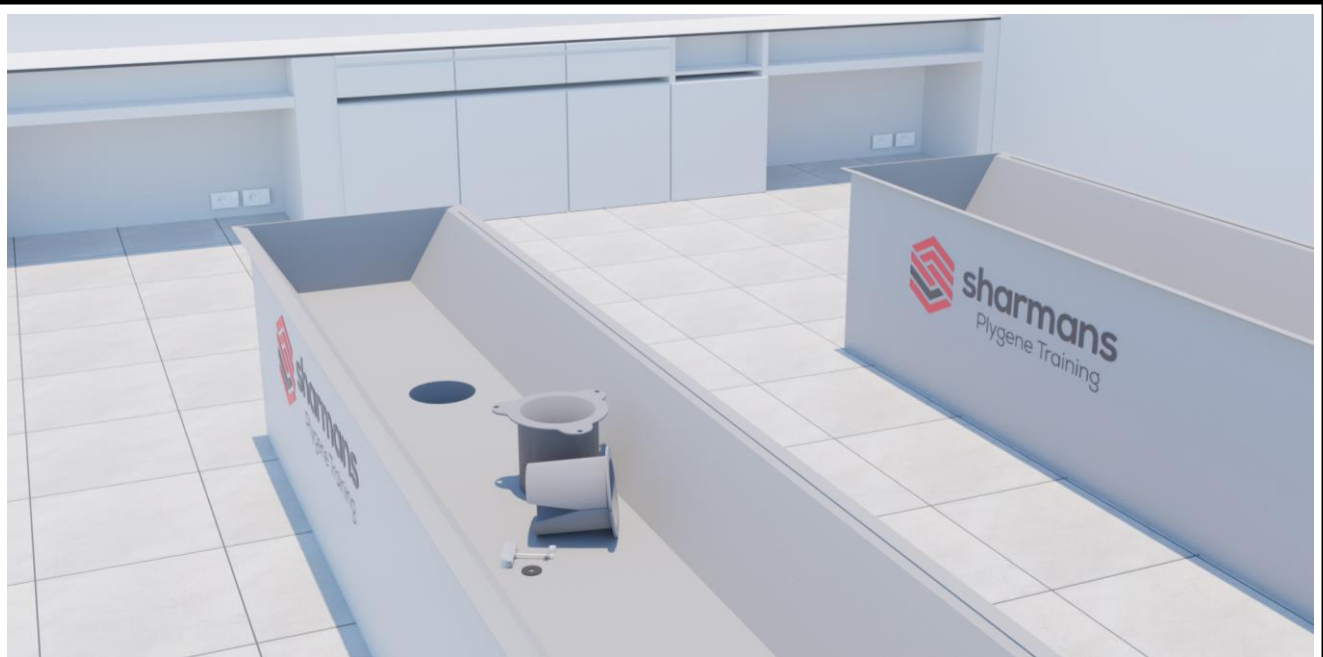


Thimble Outlet Guide



Kit Contents

- Outer Outlet Thimble
- Inner Outlet Thimble
- 3x Torx Screws
- Circular Hole Cutting Tool
- Centre Template



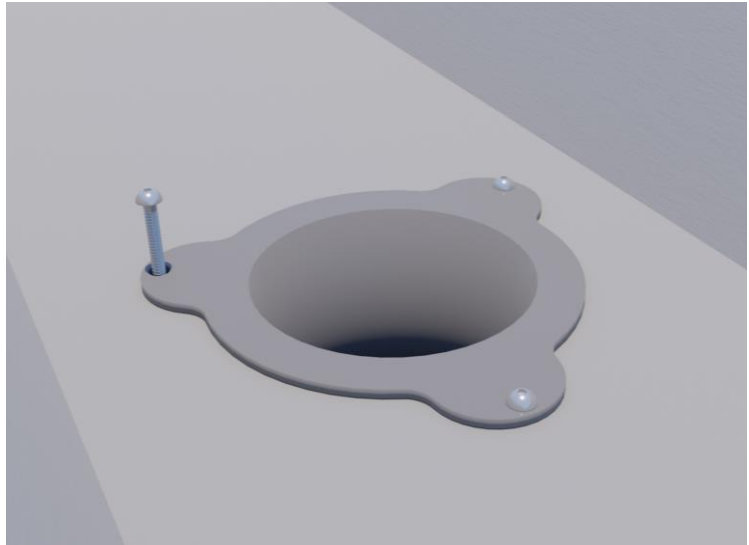
If you require any further support during your installation, please feel free to Contact the Technical Team on 01298 812371 - Alternatively, you can email us at technical@hdsharman.co.uk using your order number as the subject.



Separate the two part thimble.

Place the Outer Thimble into the Outlet.

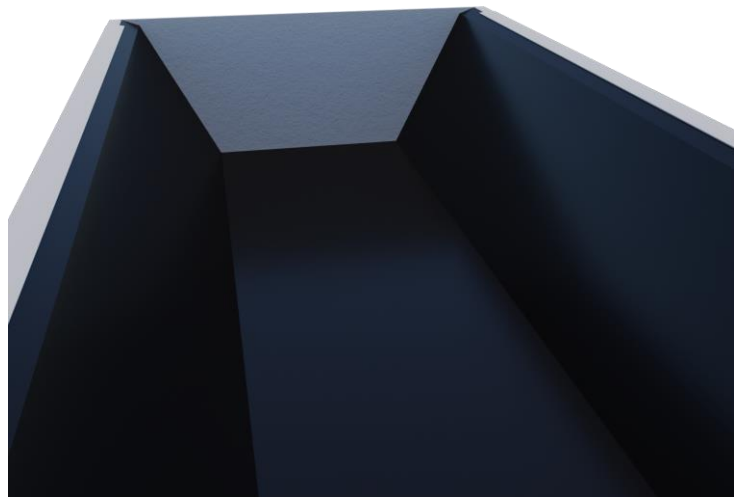
Fix the Outer Thimble using the 3no Torx Screws supplied.



Follow the Liner preparation guidelines.

Mark the Outlet Position on the adjacent Roof Sheet.

Run the Plygene Liner over the working area, covering the Outlet.



By pushing around the profile of the Outlet to locate the centre.

Position the supplied Centre Template to the Centre of the Outlet.





Position the Hole Cutting Tool through the Centre Template's hole.

Punch an indent into the Liner using the sharp tip.

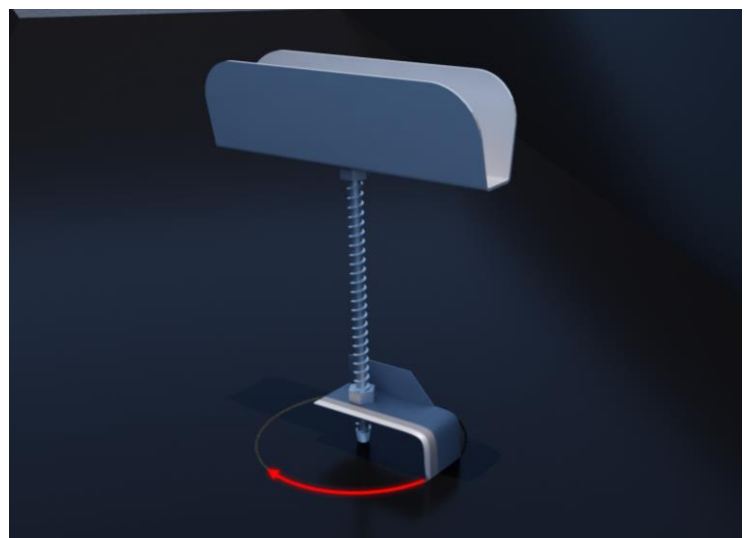


Working about the centre, turn the Cutting Tool Anti-Clockwise (Blunt Edge Leading) to score a circle into the liner.

Apply only light pressure as you go.



Turn the Cutting Tool Clockwise (Cutting Edge Leading) to begin cutting out the scored profile.





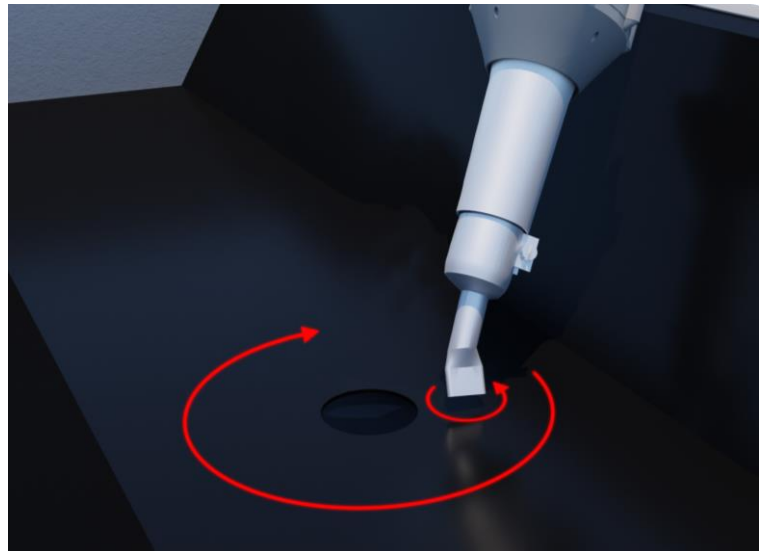
Revolve the tool multiple times to gradually deepening the cut.

Gradually apply pressure to cut through the liner – resulting in a stress free circle cut.



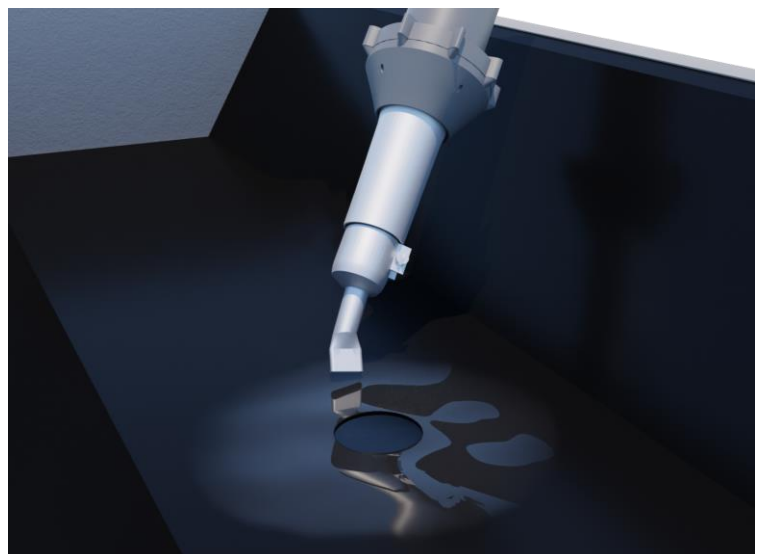
Warm the working area of Liner using a Heat Gun.

Work the Heat Gun in small circles around the area to avoid overheating one spot.



Heat the area evenly until it ripples slightly and becomes shiny.

At this point the Plygene is malleable and ready to be manipulated.





Gentle push the warmed Plygene down into the outlet.

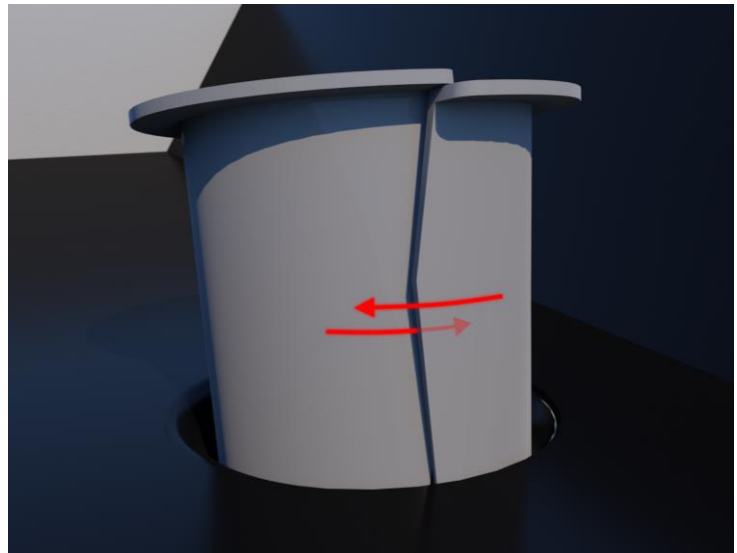
Work quickly to form the warm Plygene to the shape of the Outlet.



Overlap the Inner Thimble's split sides.

Position the Thimble roughly 45° about the center of the outlet.

Insert the thimble to approximately half its length.



Pull apart the Thimble's sides until you hear a click – This indicates that both edges are now butted together.

Using a Rubber Mallet, gently tap the Thimble to fully install it flush to the Liner – Ensure the edges remain butted together.

